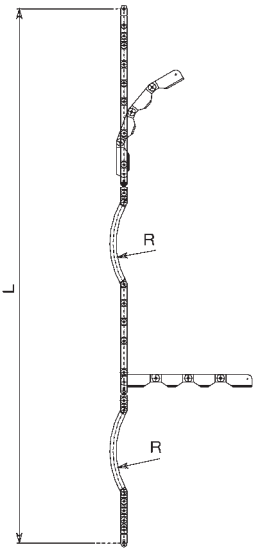


Specifically designed to connect the pulling rope with a fibre optical cable. They are composed of several jointed rods and two arched rods (to facilitate the passage on the pulley), and two drawback counterweights (to avoid cable twisting)



Model	Dimensions [mm]		Breaking load [kN]	Mass [kg]	For pulleys Ø [mm]
	L	R			
RFF 001	3900	330	30	60	400 500 650
RFF 010	4300	500	30	62	800 1000

TWO OR THREE BUNDLED CONDUCTORS HEAD BOARDS RB-RF



Certified Quality System
ISO 9001:2000

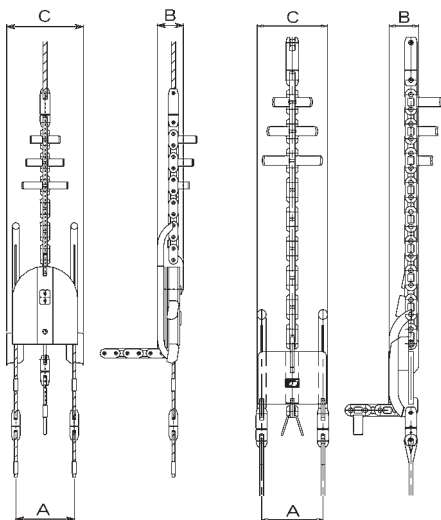
Specifically designed to connect the pulling rope, max 24 mm diameter, with 2 or 3 bundled conductors. The equipment includes the necessary rope lengths and swivel joints; quantity and models are indicated in the following tables. Special models with different characteristics can be designed according to customer's needs

BALANCING HEAD BOARDS Mod. RB

Model	Dimensions [mm]			Breaking load [kN]	Mass [kg]	For pulleys mod.	Equipment			Phase type	Note
	A	B	C				Swivel joints	Steel rope section Ø18			
RBB 001	292	160	365	280	135	CAT 506 CAT 612	2	1	No. 1-30 m	2 conductors	
RBT 010	292	160	365	280	157	CAT 812 CST 500 CST 600 CST 800	3	1	No. 1-30 m No. 1-15 m	3 conductors	balan. 1-3
RBT 260	292	160	365	280	157		3	1	No. 1-30 m No. 1-15 m	3 conductors	balan. 1-2
RBB 020	348	176	415	280	143	CAT 613 CAT 813	2	1	No. 1-30 m	2 conductors	
RBT 030	348	176	415	280	165	CAT 007 CST 601 CST 801 CST 001	3	1	No. 1-30 m No. 1-15 m	3 conductors	balan. 1-3
RBT 140	348	176	415	280	165		3	1	No. 1-30 m No. 1-15 m	3 conductors	balan. 1-2

FIXED HEAD BOARDS Mod. RF

Model	Dimensions [mm]			Breaking load [kN]	Mass [kg]	For pulleys mod.	Equipment			Phase type
	A	B	C				Swivel joints	Steel rope section Ø18		
RFB 020	292	144	335	280	98	CAT 506 CAT 612 CAT 812 CST 500 CST 600 CST 800	2	1	No. 2-3.5 m	2 conductors
RFT 030	292	144	335	280	104		3	1	No. 3-3.5 m	3 conductors
RFB 040	348	144	390	280	100	CAT 613 CAT 813 CAT 007 CST 601 CST 801 CST 001	2	1	No. 2-3.5 m	2 conductors
RFT 050	348	144	390	280	107		3	1	No. 3-3.5 m	3 conductors



Mod. RB

Mod. RF